



CORN

6695RH

Relative Maturity: 113.00



Characteristics

Cob Color	PINK	Ear Girth	M-G	Ear Height	M
Flower Date	M	GDU to Maturity	2780	Kernel Rows	16-18
Leaf Habit	S-U	Plant Height	M		

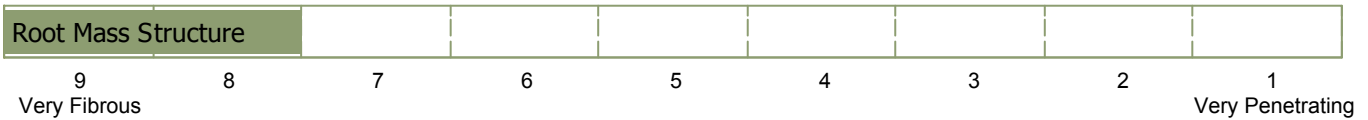
R 7™ PLACEMENT STRATEGY R7

The Right Genetics

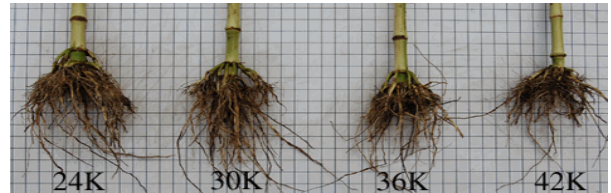
Genetic Type: LH.HY. x S.



The Right Soil Type



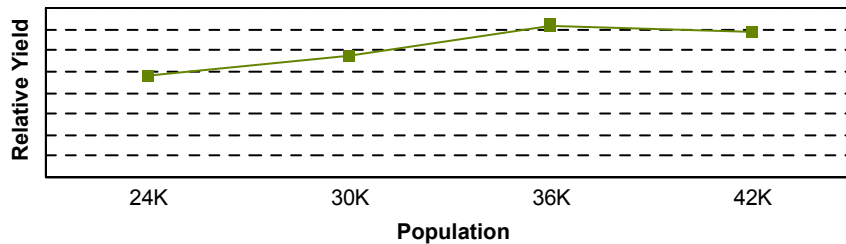
Well drained lighter textured soils with good N fertility



The Right Plant Population

Response to Population = 9

"Ear size, root mass and yield goes down when population gets too high"



The data presented herein represents the most current information available, but results may vary due to environmental conditions.

© 2008 Winfield Solutions, LLC. All rights reserved. CROPLAN GENETICS is a registered trademark of Land O'Lakes, Inc.



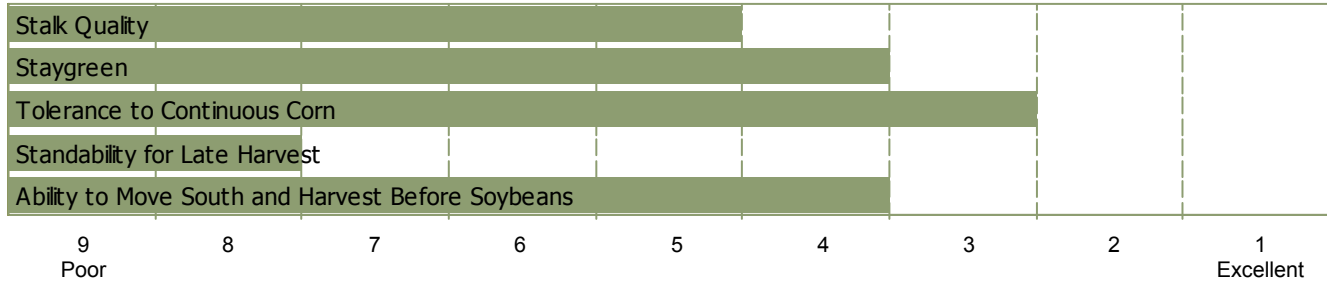
CORN

6695RH

Relative Maturity: **113.00**



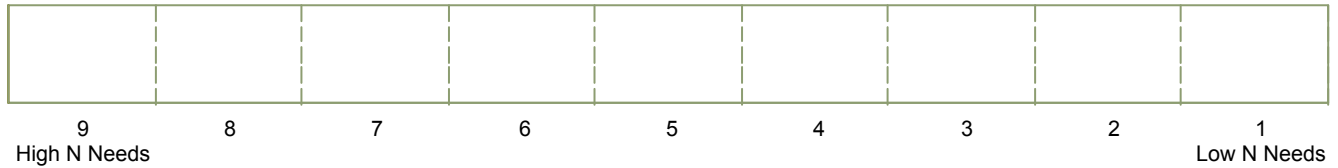
The Right Cropping System



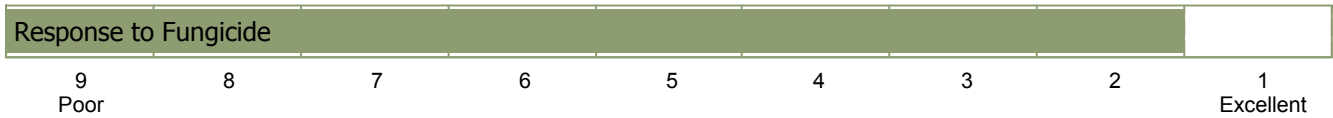
The Right Traits

Technology Traits: RR2/HX/LL
Refuge Requirements:

The Right Plant Nutrition



The Right Crop Protection



The data presented herein represents the most current information available, but results may vary due to environmental conditions.

© 2008 Winfield Solutions, LLC. All rights reserved. CROPLAN GENETICS is a registered trademark of Land O'Lakes, Inc.



6695RH

Relative Maturity: **113.00**



Technology Traits:

GENSS = Genuity™ SmartStax™
 GENVT3P = Genuity™ VT Triple PRO™
 RR2 = Roundup Ready®
 YGCB = YieldGard® Corn Borer
 YGRW = YieldGard® Rootworm
 CB = Agrisure® Corn Borer
 RW = Agrisure® Rootworm
 GT = Agrisure® Glyphosate Tolerant
 HXT = HERCULEX® XTRA
 HX = HERCULEX®
 LL = LibertyLink® System
 NDS = NutriDense® Silage

Plant Height:

T = Tall, M = Medium, S = Short

Ear Height:

H = High, M = Medium, L = Low

Staygreen:

Late-season health coming from strong leaf-disease resistance, enhancing hybrid standability

Insect Resistance Management:

Insect-protected crops are genetically improved to provide in-plant protection against selected insect pests. Beneficial insects are not affected. To preserve the benefits and insect protection of these technology crops, Monsanto Technology LLC, Syngenta Crop Protection and Dow AgroSciences have developed insect resistance management (IRM) guidelines that must be incorporated by everyone purchasing and planting insect-protected crops.

Genetic Type:

N = Northern
 S = Southern
 E = Eastern
 E2 = Eastern 2
 W = Western
 EH = Early Health
 LH = Late Health
 HY = High Yield
 F = Flint
 T = Tropical
 UR = Unrelated

Ear Flex:

Ability of hybrid to increase ear size with decreasing population. Flexible-ear type hybrids are made more tolerant to continuous corn by dropping plant population.

Flower Date:

L = Late, M = Medium, E = Early

Leaf Habit:

S-U = Semi-Upright, E = Erect



Before opening a bag of seed, be sure to read and understand the stewardship requirements, **including applicable refuge requirements for insect resistance management**, for the biotechnology traits expressed in the seed as set forth in the Monsanto Technology Agreement that you sign. By opening and using a bag of seed, you are reaffirming your obligation to comply with those stewardship requirements.

These ratings reflect trends observed in research trials that change with variations in rainfall, temperature, crop production patterns and other factors. Ratings on new hybrids are based on limited data and may change as more data is collected.